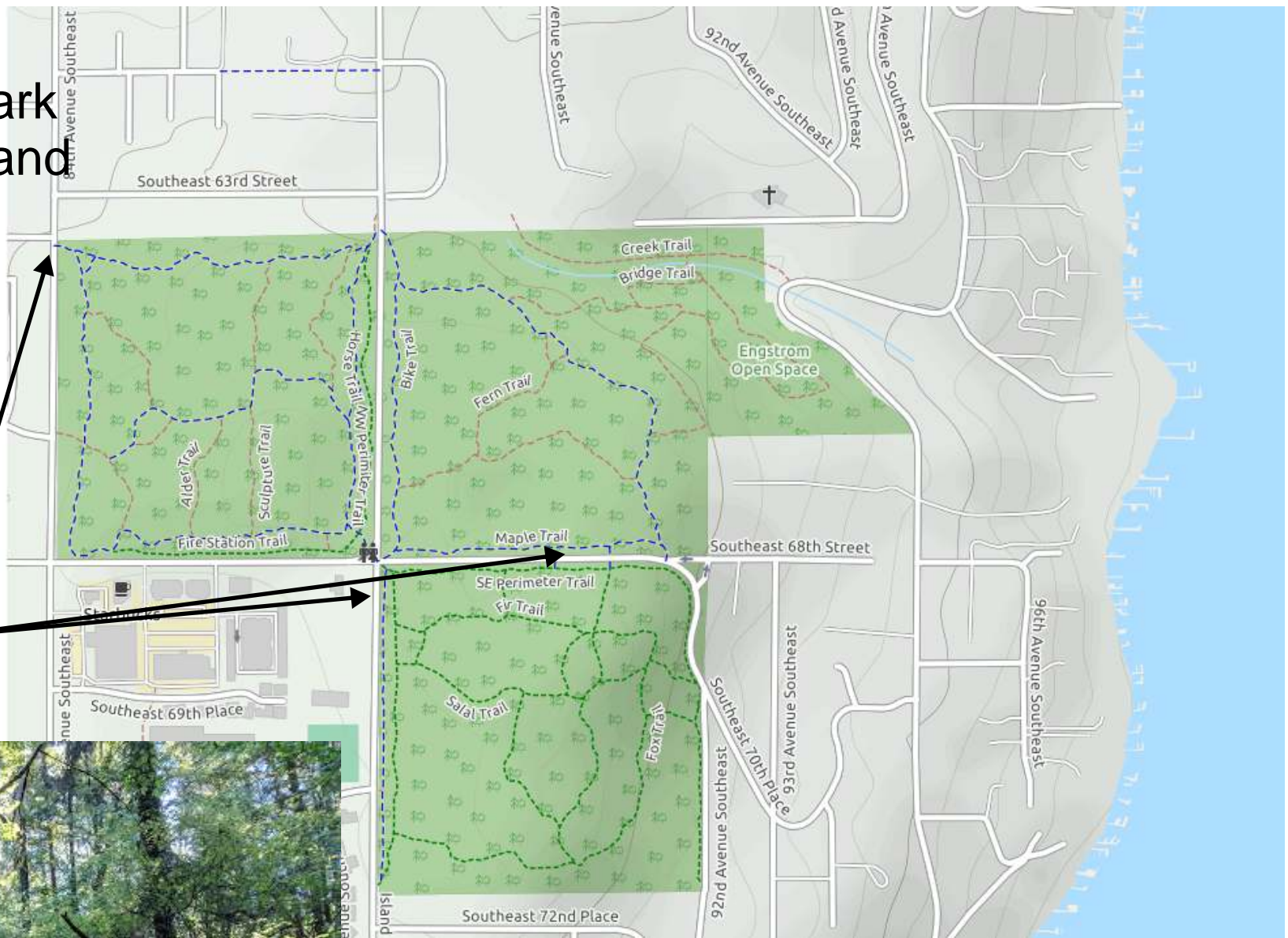


Pioneer Park Mercer Island

Parking



Pioneer Park: At the south end of Mercer Island where Island Crest Way intersects SE 68th St you are in the heart of Pioneer Park. This 113 acre park contains about six and a half miles of trails. One of my favorites is the Creek Trail which descends a narrow stream canyon all the way to East Mercer Way. Most of this park is deep mature forest land with lots of native vegetation with a beautiful wandering network of trails. East Mercer Way makes a nice extension to your walk and an even better bicycle ride on a sunny summer day with all its impressively large canopy of trees. (Go Outside! 1 World Outing Club)